
Industrial Grade Power Solutions

Driving Industrial Advancements





About Pihong

Pihong's business focus is to maintain its leadership in the power adapter market and to grow our switching power supply market by providing power solutions in telecom, datacom, networking, personal electronics & industrial markets. Our global footprint combined with our ability to provide low-cost manufacturing and strong localized technical support provides a unique dynamic to our OEM and ODM customers that allows us to offer quality solutions on time, to budget and to schedule. With an eye toward the international trend of environmental protection and carbon reduction. Zerova, a subsidiary of Pihong, specializes in the EV Charging Market and offers a comprehensive range of EV charging solutions for both commercial and passenger vehicles.

Core value

Customer service

Innovation

Sustainability



1972

Leading power supplier in the world

50+ Years

Selling products to 56+ countries around the world

Established in 1972

Top 10

Offering comprehensive power solutions 50+ years

56+ Countries

PHIHONG GROUP



Home Application



AR/VR



POS



NB



Medical



Industrial



Mobile



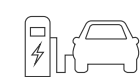
PoE&IoT



e-bike



Infrastructure



EV Charging

Your best partner

Why chose us?



Advantages

Day 1 Spirit

Comprehensive
power solutions

Globalization

Real-time
customer service

166 Patents

& 64 under
applications

> 350 R&D

High quality
engineering
experties

1W - 480kW

Charging
technology

85%

Automated
production



Certification

Phihong Groups/ Vietnam Factory

ISO 9001:2015

Hazardous substance process

IECQ QC080000:2021

Automobile

IATF 16949:2016

Environmental

ISO 14001:2015

Medical devices

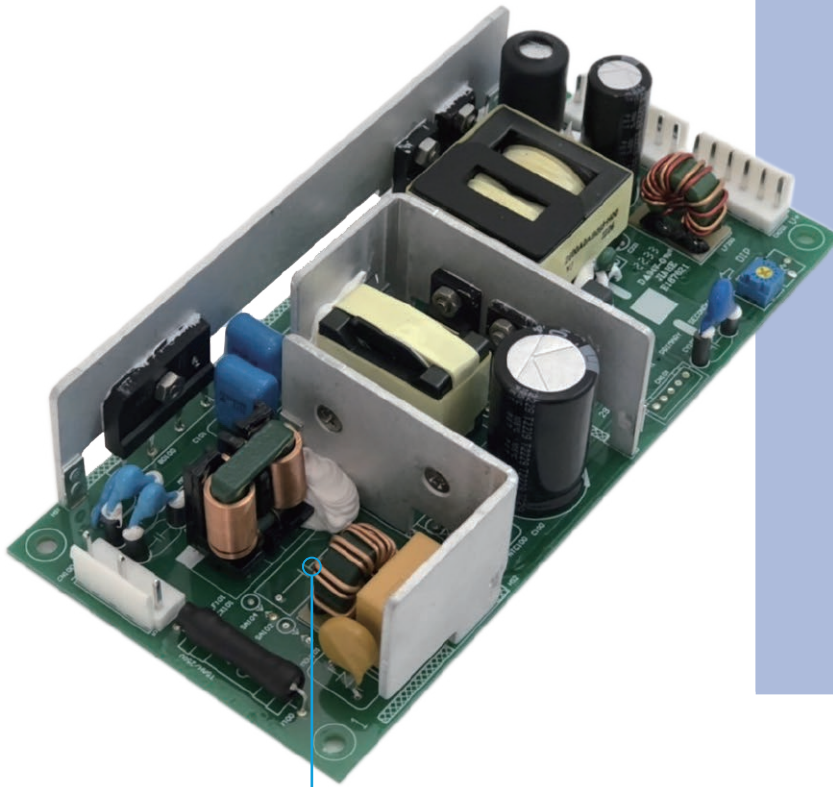
ISO 13485:2016

Occupational health and safety

ISO 45001:2018

Features

Industrial Grade Power Supply



OVP



OCP



SCP



OTP

Features

- > 90% high efficiency
- EN/UL 62368-1, and RoHS
- Wide operating temperature range
- Operation altitude up to 5000 meters.
- Against moisture, dust, and chemical pollutants
- 5 years warranty (with conditions)



CB Certified for worldwide use / PSE Compliance

Applications



Industrial automation machinery



Industrial control system



Electronic instruments, equipment, or apparatus



Semiconductor fabrication equipment

Industrial Grade Open Frame Power Supply



OVP



OCP



SCP



OTP

Safety EN 62368-1/ UL 62368-1/ IEC 62368-1



BI240-240ASPR-R

Dimension L180 x W84 x H42 mm
L7.09 x W3.30 x H1.65 inch
Weight <440 g
<1.4 lb

Power Rated	Input Voltage	Output Voltage	Constant Current	Efficiency	Remote Control	Peak Power for 10 sec 200(%)
240W	100-240V	24Vdc	10A	>91%	Yes	20A
Operating Temperature (°C)	Storage Temperature (°C)	Operation Humidity	Operation altitude	Expected Capacitor Life Time		
-10°C to 70°C	-25°C to 85°C	5 to 95%	5000 meters	10 years (115 Vac, 50% load @ 40°C)		
Input Connector		Output Connector				
JST:B3P5-VH(LF)(SN)		JST:B8P-VH(LF)(SN) JST:B2B-XH-AM(LF)(SN)				



BI240-240ASP-R

Dimension L180 x W84 x H42 mm
L7.09 x W3.30 x H1.65 inch
Weight <440 g
<1.4 lb

Power Rated	Input Voltage	Output Voltage	Constant Current	Efficiency	Remote Control	Peak Power for 10 sec 200(%)
240W	100-240V	24Vdc	10A	>91%	N/A	20A
Operating Temperature (°C)	Storage Temperature (°C)	Operation Humidity	Operation altitude	Expected Capacitor Life Time		
-10°C to 70°C	-25°C to 85°C	5 to 95%	5000 meters	10 years (115 Vac, 50% load @ 40°C)		
Input Connector		Output Connector				
JST:B3P5-VH(LF)(SN)		JST:B8P-VH(LF)(SN)				



BI240-240A-R

Dimension L180 x W84 x H42 mm
L7.09 x W3.30 x H1.65 inch
Weight <440 g
<1.4 lb

Power Rated	Input Voltage	Output Voltage	Constant Current	Efficiency	Remote Control	Peak Power for 10 sec 200(%)
240W	100-240V	24Vdc	10A	>91%	N/A	20A
Operating Temperature (°C)	Storage Temperature (°C)	Operation Humidity	Operation altitude	Expected Capacitor Life Time		
-10°C to 70°C	-25°C to 85°C	5 to 95%	5000 meters	10 years (115 Vac, 50% load @ 40°C)		
Input Connector		Output Connector				
JST:B3P5-VH(LF)(SN) JWT:A3963WV2-5P-A		JST:B6P-VH(LF)(SN),B7P-VH(LF)(SN) JWT:A3963WV2-6P,A3963WV2-7P				

Industrial Grade Open Frame Power Supply



OVP



OCP



SCP



OTP

Safety EN 62368-1/ UL 62368-1/ IEC 62368-1



BI150-240AP-R

Dimension L160 x W75 x H37 mm
L6.30 x W2.95 x H1.46 inch
Weight <290 g
<0.64 lb

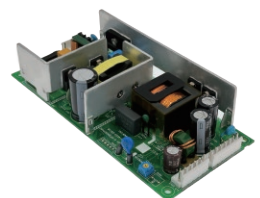
Power Rated	Input Voltage	Output Voltage	Constant Current	Efficiency	Remote Control	Peak Power for 10 sec 200(%)
150W	100-240V	24Vdc	6.3A	>90%	No	12.6A
Operating Temperature (°C)	Storage Temperature (°C)	Operation Humidity	Operation altitude	Expected Capacitor Life Time		
-10°C to 70°C	-25°C to 85°C	5 to 95%	5000 meters	10 years (115 Vac, 50% load @ 40°C)		
Input Connector		Output Connector				
JST:B3P5-VH(LF)(SN) JWT:A3963WV2-5P-A		JST:B6P-VH(LF)(SN) JWT:A3963WV2-6P				



BI150-240A-R

Dimension L160 x W75 x H37 mm
L6.30 x W2.95 x H1.46 inch
Weight <290 g
<0.64 lb

Power Rated	Input Voltage	Output Voltage	Constant Current	Efficiency	Remote Control	Peak Power for 10 sec 200(%)
150W	100-240V	24Vdc	6.3A	>90%	N/A	N/A
Operating Temperature (°C)	Storage Temperature (°C)	Operation Humidity	Operation altitude	Expected Capacitor Life Time		
-10°C to 70°C	-25°C to 85°C	5 to 95%	5000 meters	10 years (115 Vac, 50% load @ 40°C)		
Input Connector		Output Connector				
JST:B3P5-VH(LF)(SN) JWT:A3963WV2-5P-A		JST:B6P-VH(LF)(SN),B7P-VH(LF)(SN) JWT:A3963WV2-6P,A3963WV2-7P				



BI150-120A-R

Dimension L160 x W75 x H37 mm
L6.30 x W2.95 x H1.46 inch
Weight <290 g
<0.64 lb

Power Rated	Input Voltage	Output Voltage	Constant Current	Efficiency	Remote Control	Peak Power for 10 sec 200(%)
150W	100-240V	12Vdc	12.5A	>90%	N/A	N/A
Operating Temperature (°C)	Storage Temperature (°C)	Operation Humidity	Operation altitude	Expected Capacitor Life Time		
-10°C to 70°C	-25°C to 85°C	5 to 95%	5000 meters	10 years (115 Vac, 50% load @ 40°C)		
Input Connector		Output Connector				
JST:B3P5-VH(LF)(SN) JWT:A3963WV2-5P-A		JST:B6P-VH(LF)(SN),B7P-VH(LF)(SN) JWT:A3963WV2-6P,A3963WV2-7P				

Industrial Grade Open Frame Power Supply



OVP



OCP



SCP



OTP

Safety EN 62368-1/ UL 62368-1/ IEC 62368-1/ IEC 61347-1,61347-2-13



BI100-240AP-R

Dimension L155 x W62 x H33.5 mm
L6.10 x W2.44 x H1.32 inch
Weight <220 g
<0.483 lb

Power Rated	Input Voltage	Output Voltage	Constant Current	Efficiency	Remote Control	Peak Power for 10 sec 200(%)
100W	100-240V	24Vdc	4.3A	>90%	N/A	8.6A

Operating Temperature (°C)	Storage Temperature (°C)	Operation Humidity	Operation altitude	Expected Capacitor Life Time
-10°C to 70°C	-25°C to 85°C	5 to 95%	5000 meters	10 years (115 Vac, 50% load @ 40°C)

Input Connector	Output Connector
JST :B3P5-VH(LF)(SN) JWT:A3963WV2-5P-A	JST:B8P-VH(LF)(SN) JWT:A3963WV2-8P



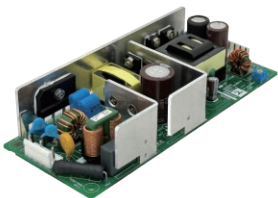
BI100-240A-R

Dimension L155 x W62 x H33.5 mm
L6.10 x W2.44 x H1.32 inch
Weight <220 g
<0.483 lb

Power Rated	Input Voltage	Output Voltage	Constant Current	Efficiency	Remote Control	Peak Power for 10 sec 200(%)
100W	100-240V	24Vdc	4.3A	>90%	N/A	N/A

Operating Temperature (°C)	Storage Temperature (°C)	Operation Humidity	Operation altitude	Expected Capacitor Life Time
-10°C to 70°C	-25°C to 85°C	5 to 95%	5000 meters	10 years (115 Vac, 50% load @ 40°C)

Input Connector	Output Connector
JST :B3P5-VH(LF)(SN) JWT:A3963WV2-5P-A	JST:B8P-VH(LF)(SN) JWT:A3963WV2-8P



BI100-120A-R

Dimension L155 x W62 x H33.5 mm
L6.10 x W2.44 x H1.32 inch
Weight <220 g
<0.483 lb

Power Rated	Input Voltage	Output Voltage	Constant Current	Efficiency	Remote Control	Peak Power for 10 sec 200(%)
100W	100-240V	12Vdc	8.5A	>90%	N/A	N/A

Operating Temperature (°C)	Storage Temperature (°C)	Operation Humidity	Operation altitude	Expected Capacitor Life Time
-10°C to 70°C	-25°C to 85°C	5 to 95%	5000 meters	10 years (115 Vac, 50% load @ 40°C)

Input Connector	Output Connector
JST :B3P5-VH(LF)(SN) JWT:A3963WV2-5P-A	JST:B8P-VH(LF)(SN) JWT:A3963WV2-8P

Industrial Grade Open Frame Power Supply



OVP



OCP



SCP



OTP

Safety EN 62368-1/ UL 62368-1/ IEC 62368-1/ / IEC 61347-1,61347-2-13



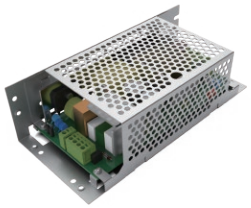
BI240-240BCEPO-R

Dimension L212 x W98 x H59 mm
L8.35 x W3.86 x H2.32 inch
Weight <799 g
<1.761 lb

Power Rated	Input Voltage	Output Voltage	Constant Current	Efficiency	Remote Control	Peak Power for 10 sec 200(%)
240W	100-240V	24Vdc	10A	>91%	Yes	20A

Operating Temperature (°C)	Storage Temperature (°C)	Operation Humidity	Operation altitude	Expected Capacitor Life Time
-10°C to 70°C	-25°C to 85°C	10 to 90%	5000 meters	10 years (115 Vac, 50% load @ 40°C)

Input Connector	Output Connector
WELINK:F365K0322050000	ANYTEK :T70402500000G



BI240-240BCUPO-R

Dimension L212 x W98 x H59 mm
L8.35 x W3.86 x H2.32 inch
Weight <786 g
<1.733 lb

Power Rated	Input Voltage	Output Voltage	Constant Current	Efficiency	Remote Control	Peak Power for 10 sec 200(%)
240W	100-240V	24Vdc	10A	>91%	Yes	20A

Operating Temperature (°C)	Storage Temperature (°C)	Operation Humidity	Operation altitude	Expected Capacitor Life Time
-10°C to 70°C	-25°C to 85°C	10 to 90%	5000 meters	10 years (115 Vac, 50% load @ 40°C)

Input Connector	Output Connector
DINKLE:0177-5301-GN DINKLE:0177-5304-GN	DINKLE:0177-5307-GN



BI240-240BCWPO-R

Dimension L212 x W98 x H59 mm
L8.35 x W3.86 x H2.32 inch
Weight <773 g
<1.704 lb

Power Rated	Input Voltage	Output Voltage	Constant Current	Efficiency	Remote Control	Peak Power for 10 sec 200(%)
240W	100-240V	24Vdc	10A	>91%	Yes	20A

Operating Temperature (°C)	Storage Temperature (°C)	Operation Humidity	Operation altitude	Expected Capacitor Life Time
-10°C to 70°C	-25°C to 85°C	10 to 90%	5000 meters	10 years (115 Vac, 50% load @ 40°C)

Input Connector	Output Connector
JOINT TECH:A3961WV-05P004	JOINT TECH:A3961WV-07P JOINT TECH:A3961WV-06P

Industrial Grade Open Frame Power Supply



OVP



OCP

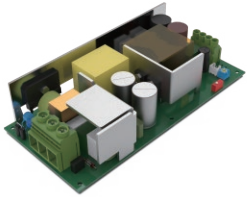


SCP



OTP

Safety EN 62368-1/ UL 62368-1/ IEC 62368-1/ IEC 61347-1,61347-2-13



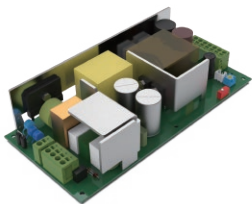
BI240-240BNEPO-R

Dimension L180 x W84 x H43 mm
L7.09 x W3.307 x H1.69 inch
Weight <513 g
<1.131 lb

Power Rated	Input Voltage	Output Voltage	Constant Current	Efficiency	Remote Control	Peak Power for 10 sec 200(%)
240W	100-240V	24Vdc	10A	>91%	Yes	20A

Operating Temperature (°C)	Storage Temperature (°C)	Operation Humidity	Operation altitude	Expected Capacitor Life Time
-10°C to 70°C	-25°C to 85°C	10 to 90%	5000 meters	10 years (115 Vac, 50% load @ 40°C)

Input Connector	Output Connector
WELINK:F365K0322050000	ANYTEK :T70402500000G



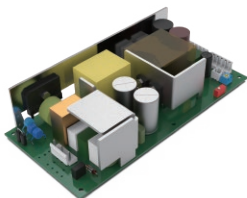
BI240-240BNUPO-R

Dimension L180 x W84 x H43 mm
L7.09 x W3.307 x H1.69 inch
Weight <481 g
<1.06 lb

Power Rated	Input Voltage	Output Voltage	Constant Current	Efficiency	Remote Control	Peak Power for 10 sec 200(%)
240W	100-240V	24Vdc	10A	>91%	Yes	20A

Operating Temperature (°C)	Storage Temperature (°C)	Operation Humidity	Operation altitude	Expected Capacitor Life Time
-10°C to 70°C	-25°C to 85°C	10 to 90%	5000 meters	10 years (115 Vac, 50% load @ 40°C)

Input Connector	Output Connector
DINKLE:0177-5301-GN DINKLE:0177-5304-GN	DINKLE:0177-5307-GN



BI240-240BNWPO-R

Dimension L180 x W84 x H43 mm
L7.09 x W3.307 x H1.69 inch
Weight <486 g
<1.071 lb

Power Rated	Input Voltage	Output Voltage	Constant Current	Efficiency	Remote Control	Peak Power for 10 sec 200(%)
240W	100-240V	24Vdc	10A	>91%	Yes	20A

Operating Temperature (°C)	Storage Temperature (°C)	Operation Humidity	Operation altitude	Expected Capacitor Life Time
-10°C to 70°C	-25°C to 85°C	10 to 90%	5000 meters	10 years (115 Vac, 50% load @ 40°C)

Input Connector	Output Connector
JOINT TECH:A3961WV-05P004	JOINT TECH:A3961WV-07P JOINT TECH:A3961WV-06P

TAIWAN

Headquarters

Phihong Technology Co., Ltd

📍 No.568,Fuxing 3rd Rd.,Guishan Dist., Taoyuan City 33383, Taiwan,R.O.C.

☎ +886-3-327-7288

✉ phsales@phihong.com.tw

🌐 www.phihong.com.tw

CHINA

CN | Jiangxi, Dongguan

Phihong China

📍 Science & Technology Rd., Silver Lake Industrial Area Qingxi Town, Dong Guan City, Guang Dong , China

☎ +86-768-86817888

✉ phsales@phihong.com.tw

VIETNAM

VT | Hai Phong

Phihong Vietnam

📍 Lot CN5 An Duong Industrial Zone, Hong Phong Commune, An Duong County, Hai Phong City, Vietnam

☎ +84-22526-58899

✉ phsales@phihong.com.tw

🌐 www.phihong.com.tw

USA

US | Fremont, New York

Phihong USA

📍 47800 Fremont Blvd.Fremont, CA, USA

☎ +1-510-445-0100

✉ usasales@phihongusa.com

🌐 www.phihongusa.com

🌐 www.midspans.com

JAPAN

JP | Tokyo

Phihong Japan

📍 VORT Toyo-cho Bldg 5F, 3-23-24 Toyo, Koto-ku, Tokyo 135-0016 Japan

☎ +81-3-5677-1678

✉ phsales@phihong.com.tw

🌐 www.phihong.co.jp



phihong.com.tw

Infinite energy possibilities!

© 2023 Phihong Technology Co., Ltd. All Rights Reserved.

Phihong is not responsible for any error, and reserves the right to make changes without notice. Please contact our sales person for product details.

